



# 122 NW 10<sup>TH</sup> AVE

## SECOND GENERATION RESTAURANT SPACE AVAILABLE

### ADDRESS

122 NW 10th Ave | Portland, OR

### AVAILABLE SPACE

1,952 SF

### RENTAL RATE

\$25.00 PSF/YR plus NNN  
(2023 NNN \$6.75 PSF/YR)

### TRAFFIC COUNTS

NW 10th Ave – 3,808 ADT ('22)

NW Couch St – 3,509 ADT ('22)

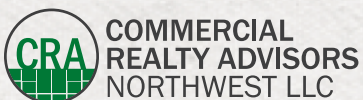
W Burnside St – 22,019 ADT ('22)



**FOR LEASE**

## HIGHLIGHTS

- Excellent 2nd generation restaurant space in the heart of the Pearl District.
- Grease interceptor serving premises, and Type 1 venting.
- Neighbors include Hana Sushi & April's Tea House, Hello from Portland, Republica, La Real, Deschutes Brewery, The Armory, Powell's Books, Made Here PDX, Athleta, Dogtopia, Tactics and more.
- Available now!



**Kathleen Healy** 503.880.3033 | [kathleen@cra-nw.com](mailto:kathleen@cra-nw.com)  
**Ashley Heichelbech** 503.490.7212 | [ashley@cra-nw.com](mailto:ashley@cra-nw.com)

**503.274.0211**  
[www.cra-nw.com](http://www.cra-nw.com)

# 122 NW 10TH AVE PORTLAND, OR



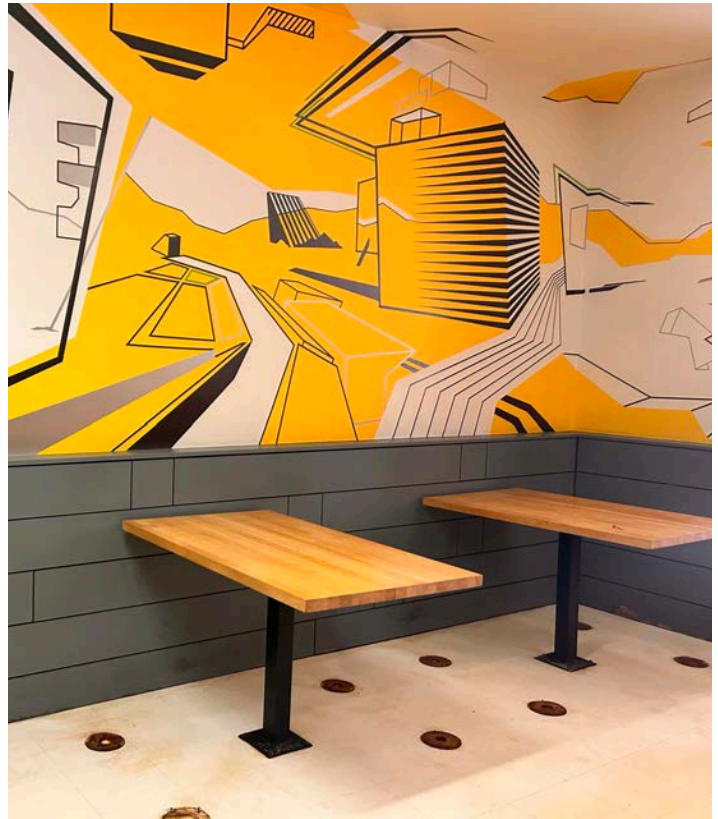
**SITE**

**The Brewery Blocks**



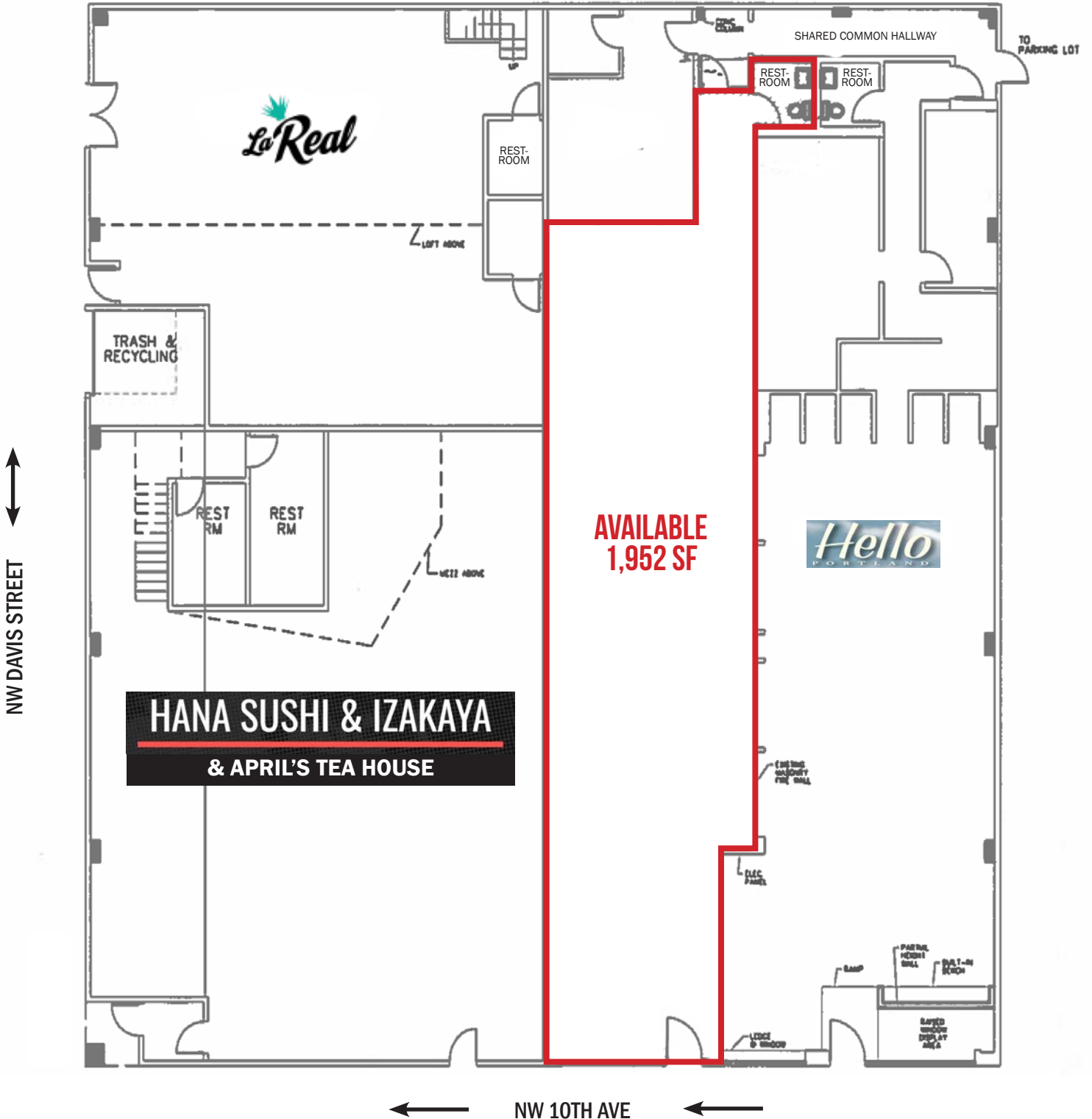
INTERIOR IMAGES

122 NW 10TH AVE  
PORTLAND, OR



SITE PLAN

122 NW 10TH AVE  
PORTLAND, OR



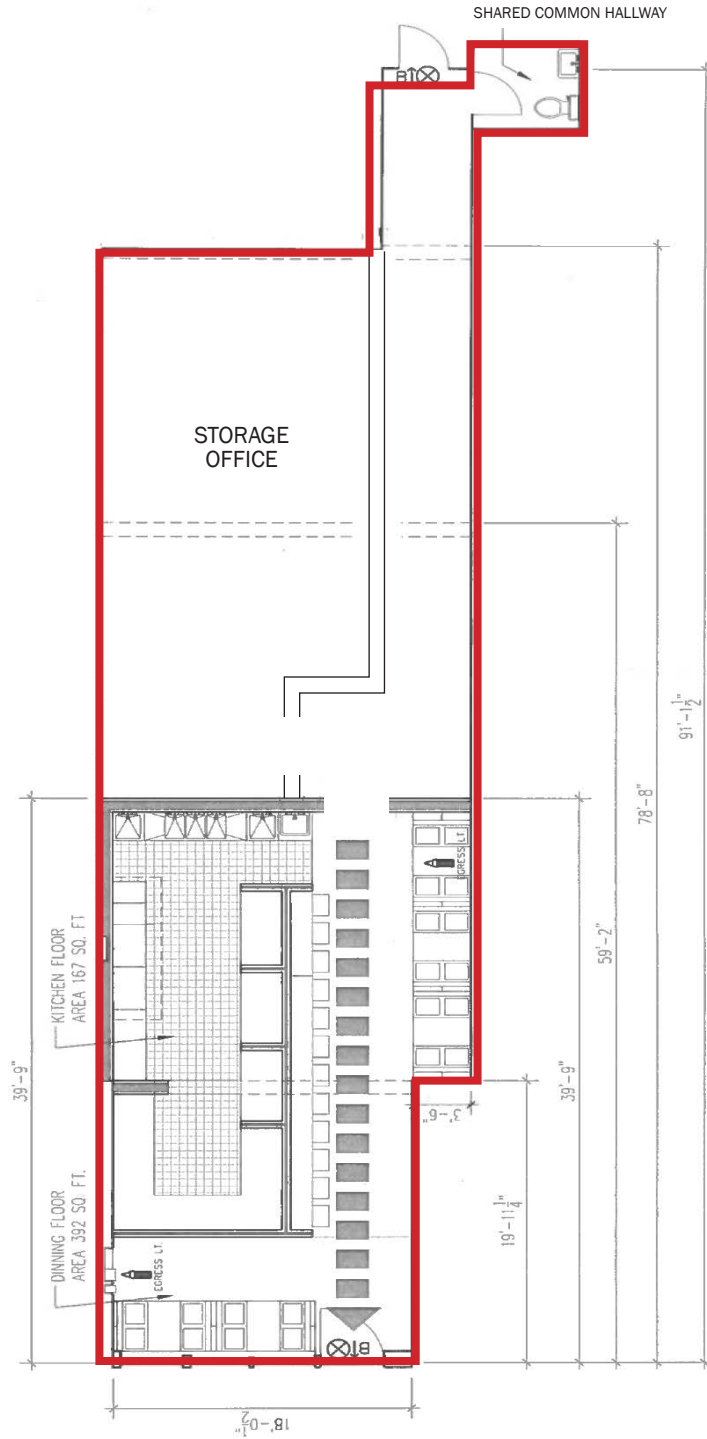
The information contained herein has been obtained from sources Commercial Realty Advisors NW LLC deems reliable. We have no reason to doubt its accuracy, but Commercial Realty Advisors NW LLC does not guarantee the information. The prospective buyer or tenant should carefully verify all information obtained herein. PLAN SHOWN IS FOR ILLUSTRATIVE PURPOSES ONLY. TENANT TO VERIFY.



FLOOR PLAN

122 NW 10TH AVE  
PORTLAND, OR

AVAILABLE  
1,952 SF



The information contained herein has been obtained from sources Commercial Realty Advisors NW LLC deems reliable. We have no reason to doubt its accuracy, but Commercial Realty Advisors NW LLC does not guarantee the information. The prospective buyer or tenant should carefully verify all information obtained herein. PLAN SHOWN IS FOR ILLUSTRATIVE PURPOSES ONLY. TENANT TO VERIFY.



# DEMOGRAPHIC SUMMARY

# 122 NW 10TH ST PORTLAND, OR

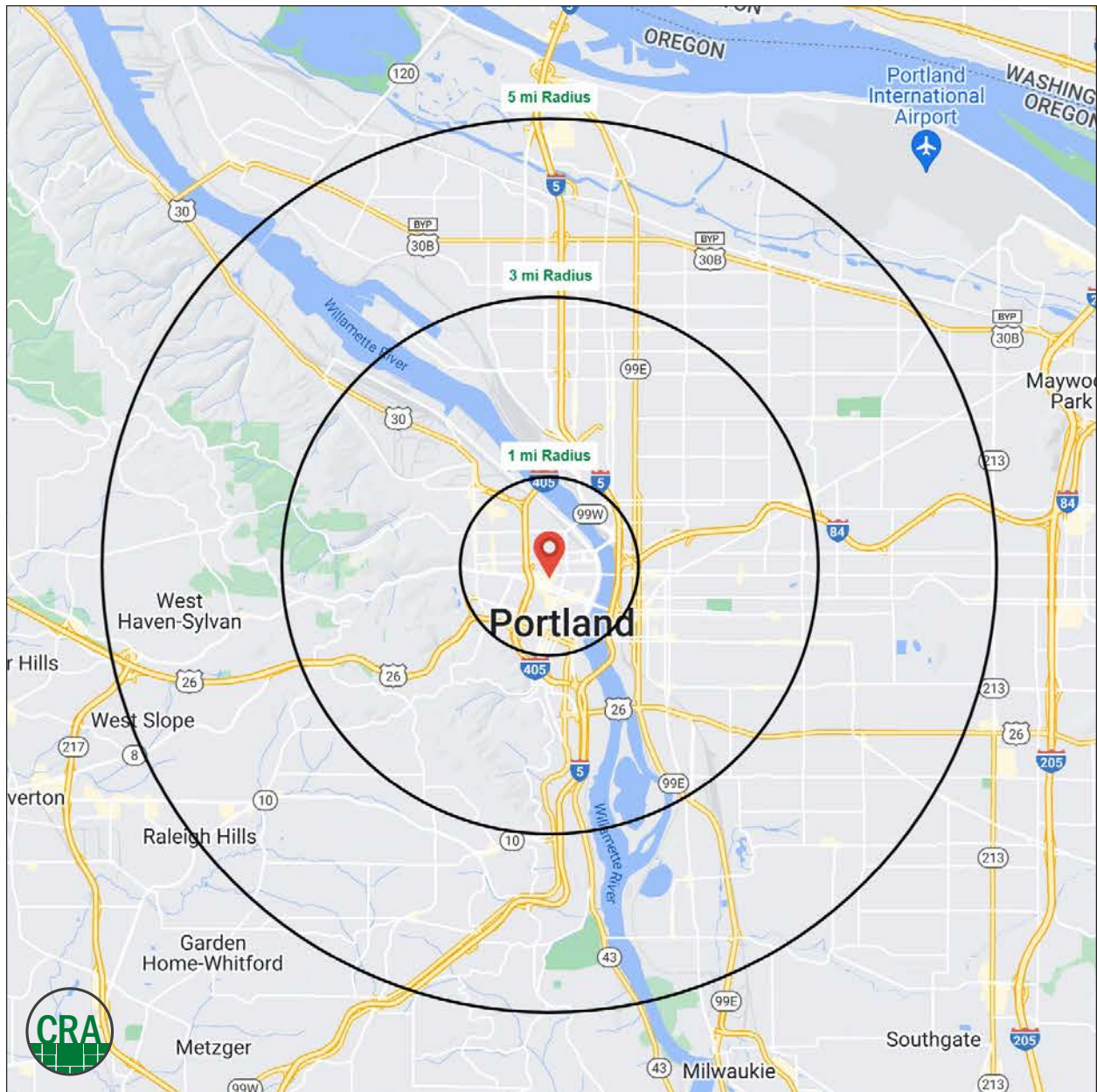
Source: Regis - SitesUSA (2023)	1 MILE	3 MILE	5 MILE
Estimated Population 2023	43,357	186,319	429,771
Projected Population 2028	43,448	194,005	444,089
Average HH Income	\$108,133	\$140,024	\$144,950
Median Home Value	\$598,576	\$656,394	\$600,983
Daytime Demographics 16+	117,356	265,759	432,956
Some College or Higher	84.0%	87.7%	86.1%

**\$598,576**

Median Home Value  
1 MILE RADIUS

**38.5**

Median Age  
1 MILE RADIUS



## Summary Profile

2010-2020 Census, 2023 Estimates with 2028 Projections  
 Calculated using Weighted Block Centroid from Block Groups



Lat/Lon: 45.5242/-122.6808

<b>122 NW 10th Ave Portland, OR 97209</b>	<b>1 mi radius</b>	<b>3 mi radius</b>	<b>5 mi radius</b>
<b>Population</b>			
2023 Estimated Population	43,357	186,319	429,771
2028 Projected Population	43,448	194,005	444,089
2020 Census Population	43,555	186,427	432,524
2010 Census Population	34,516	151,747	377,204
Projected Annual Growth 2023 to 2028	-	0.8%	0.7%
Historical Annual Growth 2010 to 2023	2.0%	1.8%	1.1%
2023 Median Age	38.5	38.0	38.3
<b>Households</b>			
2023 Estimated Households	28,985	98,411	203,309
2028 Projected Households	29,423	103,330	212,699
2020 Census Households	28,928	97,495	202,029
2010 Census Households	21,740	77,243	173,343
Projected Annual Growth 2023 to 2028	0.3%	1.0%	0.9%
Historical Annual Growth 2010 to 2023	2.6%	2.1%	1.3%
<b>Race and Ethnicity</b>			
2023 Estimated White	71.5%	75.9%	75.7%
2023 Estimated Black or African American	5.2%	5.4%	5.1%
2023 Estimated Asian or Pacific Islander	9.8%	6.8%	7.3%
2023 Estimated American Indian or Native Alaskan	1.1%	0.7%	0.7%
2023 Estimated Other Races	12.4%	11.2%	11.2%
2023 Estimated Hispanic	13.9%	10.4%	10.0%
<b>Income</b>			
2023 Estimated Average Household Income	\$108,133	\$140,024	\$144,950
2023 Estimated Median Household Income	\$75,694	\$101,939	\$105,839
2023 Estimated Per Capita Income	\$73,409	\$74,436	\$68,949
<b>Education (Age 25+)</b>			
2023 Estimated Elementary (Grade Level 0 to 8)	1.8%	1.2%	1.6%
2023 Estimated Some High School (Grade Level 9 to 11)	2.9%	1.8%	2.1%
2023 Estimated High School Graduate	11.3%	9.3%	10.2%
2023 Estimated Some College	17.3%	15.7%	17.1%
2023 Estimated Associates Degree Only	4.8%	4.7%	5.4%
2023 Estimated Bachelors Degree Only	35.1%	38.8%	37.0%
2023 Estimated Graduate Degree	26.8%	28.6%	26.6%
<b>Business</b>			
2023 Estimated Total Businesses	9,000	22,761	37,194
2023 Estimated Total Employees	102,205	216,007	308,987
2023 Estimated Employee Population per Business	11.4	9.5	8.3
2023 Estimated Residential Population per Business	4.8	8.2	11.6

©2023, Sites USA, Chandler, Arizona, 480-491-1112 Demographic Source: Applied Geographic Solutions 4/2023, TIGER Geography - RS1

This report was produced using data from private and government sources deemed to be reliable. The information herein is provided without representation or warranty.

*For more information, please contact:*

**ASHLEY HEICHELBECH** 503.490.7212 | ashley@cra-nw.com

**KATHLEEN HEALY** 503.880.3033 | kathleen@cra-nw.com



KNOWLEDGE

RELATIONSHIPS

EXPERIENCE



**COMMERCIAL  
REALTY ADVISORS  
NORTHWEST LLC**

*Licensed brokers in Oregon & Washington*

 15350 SW Sequoia Parkway, Suite 198 • Portland, Oregon 97224



[www.cra-nw.com](http://www.cra-nw.com)



503.274.0211

The information herein has been obtained from sources we deem reliable. We do not, however, guarantee its accuracy. All information should be verified prior to purchase/leasing. View the Real Estate Agency Pamphlet by visiting our website, [www.cra-nw.com/home/agency-disclosure.html](http://www.cra-nw.com/home/agency-disclosure.html). CRA PRINTS WITH 30% POST-CONSUMER, RECYCLED-CONTENT MATERIAL.